



Viewings by appointment  
0207 483 2611

abbey  
properties

# Holcroft Court, W1W 5DN

£5,200 \*fees apply

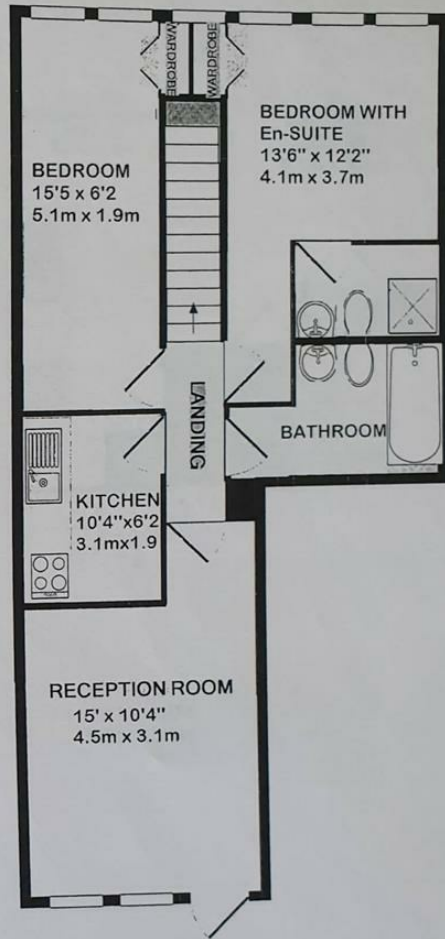


We present a large and bright three bedroom apartment set on the fourth and fifth floor, with a lift, of this purposed built residential block located in the heart of Fitzrovia.

With the benefit of a west facing balcony off the reception room, access to a large communal garden and the heating & hot water included.

**\*Heating and hot water included\*\***





TOP FLOOR  
APPROX. FLOOR  
AREA 535 SQ.FT.  
(49.7 SQ.M.)  
TOTAL APPROX. FLOOR AREA 775 SQ.FT. (72.0 SQ.M.)



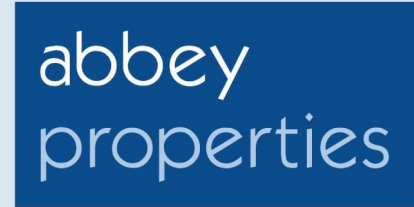
Energy Efficiency Rating			Environmental Impact (CO <sub>2</sub> ) Rating		
	Current	Potential		Current	Potential
<i>Very energy efficient - lower running costs</i>			<i>Very environmentally friendly - lower CO<sub>2</sub> emissions</i>		
(92 plus) <b>A</b>			(92 plus) <b>A</b>		
(81-91) <b>B</b>			(81-91) <b>B</b>		
(69-80) <b>C</b>			(69-80) <b>C</b>		
(55-68) <b>D</b>			(55-68) <b>D</b>		
(39-54) <b>E</b>			(39-54) <b>E</b>		
(21-38) <b>F</b>			(21-38) <b>F</b>		
(1-20) <b>G</b>			(1-20) <b>G</b>		
<i>Not energy efficient - higher running costs</i>			<i>Not environmentally friendly - higher CO<sub>2</sub> emissions</i>		
<b>England &amp; Wales</b>	EU Directive 2002/91/EC		<b>England &amp; Wales</b>	EU Directive 2002/91/EC	

Viewings by appointment  
**0207 483 2611**

7-8 Regency Parade  
London, NW3 5EG

lettings@abbeyproperties.co.uk

www.abbeyproperties.co.uk



\*All Fees stated are inclusive of VAT  
(calculated at 20%)

Referencing Fee: £29.50 per applicant

Inventory/check-in fee: From £120 to £260 (dependent on the size of the property).

Administration fees: £107 per property

**Important Notice**

In accordance with the Property Misdescriptions Act (1991) we have prepared these particulars as a general guide to give a broad description of the property. They are not intended to constitute or form part of a contract. We have not carried out a structural survey and the services, appliances and specific fittings have not been tested. All measurements, photographs, virtual tours, floor plans and distances mentioned are given as a guide and should not be relied on. Details of lease, service charge and ground rent are given as a guide and should be confirmed by your solicitor prior to exchange of contracts. The copyright of these property particulars remain exclusive property of Abbey Properties.

